



Leadership for All

How to Become More Involved in DECA

Fall Opportunities



School-Based Enterprise (SBE)

- SBE is a DECA event where you can work with your DECA team to promote, organize, and improve your DECA-run student store
- There are two types of SBE events:
 - SBE Food Operations, where you sell food
 - SBE Retail Operations, where you sell apparel, merchandise, and other retail items
- Many schools have a SBE class that you must sign up for to participate in the event
 - If your school doesn't have an SBE class, or even a student store, you can lead a team to create your own student store for your school!
- Talk to an advisor if you are interested in SBE
- Learn more about SBE here: <https://www.deca.org/sbe>

Through SBE, you will learn essential leadership skills like:

- Organization
- Management
- Timeliness
- Communication
- Presentation
- Etc.



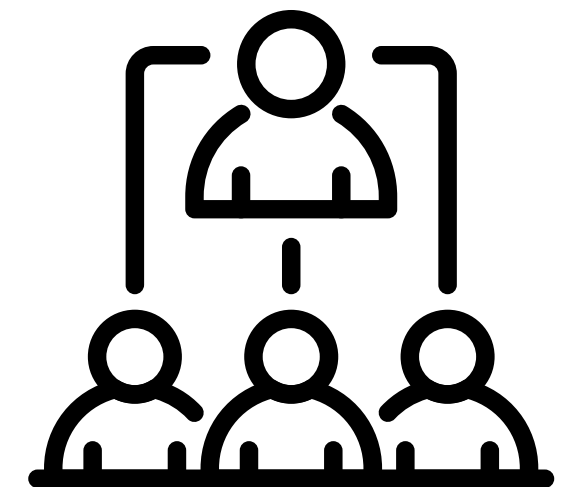
Source: DECA Direct

Project Management (PM)

- There are 6 different types of PM events:
 - Business Solutions Project
 - Career Development Project
 - Community Awareness Project
 - Community Giving Project
 - Financial Literacy Project
 - Sales Project
- In each PM event, you will work with your team to create a solution to a problem that you see in your community and implement it
- Your team will represent your chapter as a whole
- We highly recommend you get other chapter members involved in your project, not just your team, to take your project to the next level!

PM events will teach you essential leadership skills like:

- Organization
- Management
- Timeliness
- Communication
- Relationship building
- Decision-making
- Etc.



Chapter Campaigns

- Chapter officers can lead their chapters in carrying out several chapter campaigns
- If you complete a certain amount of campaigns, your chapter can win two allocations to attend the Thrive Academy at ICDC!
- Choose one or two chapter campaigns that you are interested in, and work with your officer team, members, and advisors to complete them!
- There are 2 sets of chapter campaigns with different requirements. Visit [this](#) link to find out more information regarding Thrive Campaign requirements! Page 2 is especially helpful.
- All chapter campaigns and further details can be found here: <https://www.deca.org/campaigns>

Through chapter campaigns, you will learn essential leadership skills like:

- Organization
- Management
- Commitment
- Creativity
- Initiative

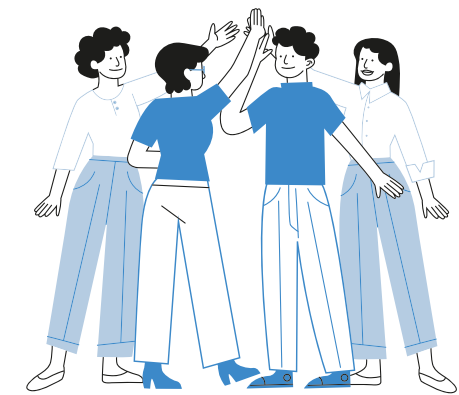


Washington's State Officer Team

- You can either run to become an Area President or State President: the applications are **similar but different**
- If you want to run, you must be extremely dedicated to DECA, as this role is a large time commitment. You can always start by filling out an intent to apply form, which is non-binding.
- You must attend one State Office Workshop, which is held both online and sometimes in person at FLC
- Then, you fill out a written application and take the candidate exam (50 questions that cover general DECA knowledge)
- After you pass this round, you will be invited to participate in a virtual interview
- Finally, you will campaign at your Area/State conference! Campaign varies across each area, so ask your area president for specific guidelines.
- You should talk to an advisor before beginning the application process!
- More information can be found here: <https://wadeca.org/run-for-office/area-president/>

Through the state officer team, you will learn essential leadership skills like:

- Organization
- Team-building
- Career development
- Adaptability
- Creativity
- Marketing
- Etc.

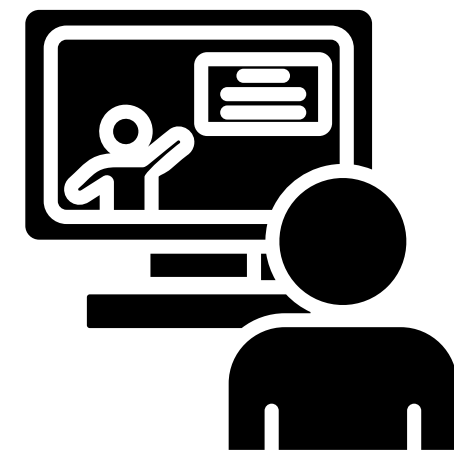


Mentorship Program

- If your school doesn't already have a mentorship program, you can start planning one for your chapter in the fall!
- Most school's mentorship programs begin recruiting mentors in the fall
- Mentorship programs are a great way for returning DECA members to teach their skills to new DECA members, benefitting everybody in the chapter
- When planning a mentorship program, think about how large the program will be, how to recruit mentors, what you will teach mentees, etc.
- Tip: reach out to schools in your area that have already established mentorship programs to get some guidance!

Through establishing a mentorship program, you will learn essential leadership skills like:

- Management
- Focus
- Self-discipline
- Organization



Winter Opportunities



Lead DECA Team

- The Lead DECA Team may or may not be offered this year, so check with a state officer!
- The Lead DECA Team creates multiple resources (like this one!) for the Lead DECA website
- This is a fun way to learn more about how chapters across the state are run and contribute to the DECA community
- The Lead DECA team looks for people to strive to be leaders in their community

Through Lead DECA, you will learn essential leadership skills like:

- Creativity
- Time-management
- Organization
- Communication



DECA's Corporate Challenges

- DECA Inc. offers several corporate challenges that involve leadership skills
- Some examples of corporate challenges are the Ethical Leadership Challenge, Social Impact Leader of Tomorrow Challenge, etc.
- Most challenges have special prizes (including some cash prizes), and winners can attend ICDC to receive their award
- Each challenge has varying deadlines and guidelines, which can all be found here:
<https://www.deca.org/challenges>

Corporate challenges will teach you essential leadership skills like:

- Communication/speaking
- Creativity
- Critical thinking
- Innovation
- Vision



Some of the companies that have sponsored past DECA corporate challenges

Summer Opportunities



Diversity, Inclusion, and Equity (DEI) Team

- WA DECA's DEI Team works to improve diversity, inclusion, and equity in all WA DECA events
- The DEI Team typically holds a booth at FLC and SCDC that educates members on their initiatives
- Some past DEI initiatives include improving scholarship opportunities, awareness efforts for small businesses and underrepresented holidays or groups
- This is an amazing way to meet people from across the state and work together to make WA DECA more inclusive!

Through DEI, you will learn essential leadership skills like:

- Creativity
- Problem-solving
- Empathy

