

DECA

DRESS CODE

Professional appearance is an important aspect of the overall preparation of DECA members for the business world. To that end, DECA supports a dress code for its career-based functions that exemplifies the highest standards of professionalism while being non-discriminatory between genders.

DECA's board of directors has developed the following official dress standards for the International Career Development Conference. Students, advisors and chaperones must follow the dress code.

Competitors must wear an official DECA blazer during interaction with the judges. While official DECA blazers are not required during briefing and testing, professional business dress is required. Professional dress should also be worn to all conference sessions including workshops and special meal functions such as luncheons.

For a more polished, professional appearance, it is recommended that attendees wear appropriate hosiery/socks.

All skirts and dresses must be at or below the knee.

AN OFFICIAL DECA BLAZER IS REQUIRED TO RECEIVE RECOGNITION OR AN AWARD ON STAGE.

WHEN APPEARING BEFORE JUDGES AND ON-STAGE

- Official DECA blazer
- Dress slacks or dress skirt or business dress
- Collared dress shirt and appropriate neckwear (necktie, ascot, scarf) or Dress blouse
- Dress shoes

DECA GENERAL SESSIONS, MEAL FUNCTIONS, EVENT BRIEFING, MANUAL REGISTRATION AND TESTING

- Business suit or sport coat or blazer (blazer optional)
- Dress slacks, dress skirt or business dress
- Collared dress shirt, dress blouse or dress sweater
- Blazer optional
- Dress shoes
- Necktie/scarf (optional)

DECA BUSINESS CASUAL

- Casual slacks (e.g., Dockers), blouse or shirt, socks and casual shoes.
- Jeans, t-shirts and athletic shoes are not included in business casual attire.

UNACCEPTABLE DURING DECA ACTIVITIES

- Skin-tight or revealing clothing
- Midriff-baring clothing
- Swimwear
- Athletic clothing
- Leggings or graphic designed hosiery/tights
- Clothing with printing that is suggestive, obscene or promotes illegal substances
- Unacceptable types of dress shoes include boat shoes, canvas or fabric shoes, flip flops or casual sandals, athletic shoes, industrial work shoes and hiking boots.

When judging adherence to the dress code, DECA asks that advisors, teachers and chaperones use observation as the tool for assessing compliance. DECA does not support or condone the touching of students or their clothing as a means of determining whether or not a student is following the dress code guidelines.

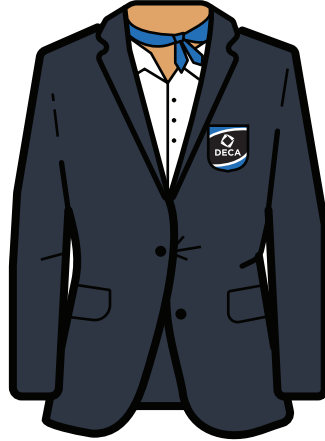
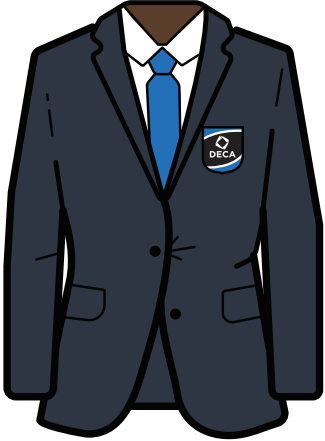
Any medical exceptions to this code must be documented in the conference headquarters prior to the beginning of the conference. This is the responsibility of the local advisor.



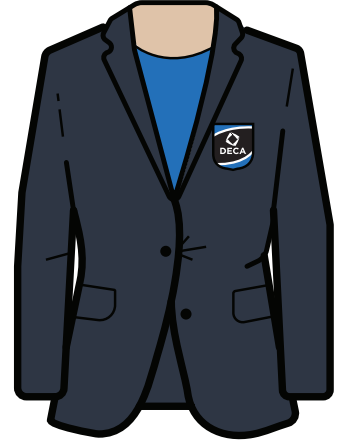
DRESS TO IMPRESS

DRESS CODE WHEN APPEARING BEFORE JUDGES AND ON-STAGE AT ICDC

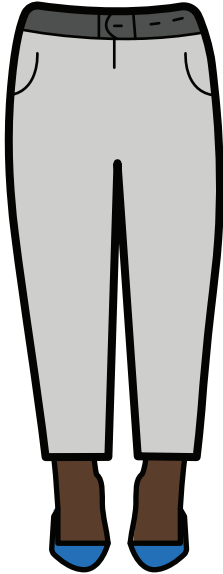
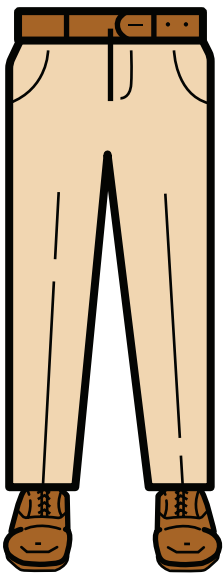
OFFICIAL DECA BLAZER WITH COLLARED DRESS SHIRT & APPROPRIATE NECKWEAR



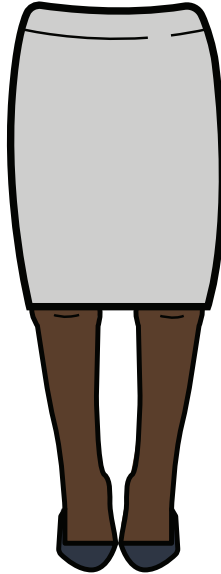
OFFICIAL DECA BLAZER WITH DRESS BLOUSE



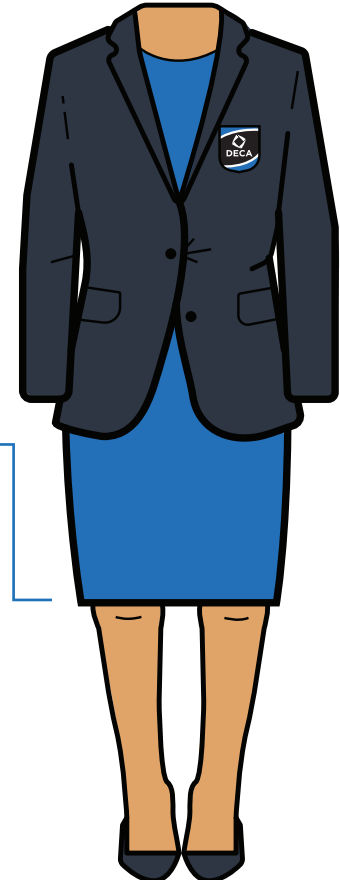
DRESS SLACKS



DRESS SKIRT

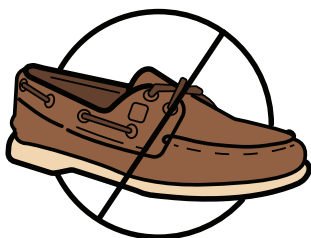


OFFICIAL DECA BLAZER WITH BUSINESS DRESS



ALL SKIRTS & DRESSES MUST BE AT OR BELOW THE KNEE.

DRESS SHOES



BOAT SHOES ARE UNACCEPTABLE FOOTWEAR.